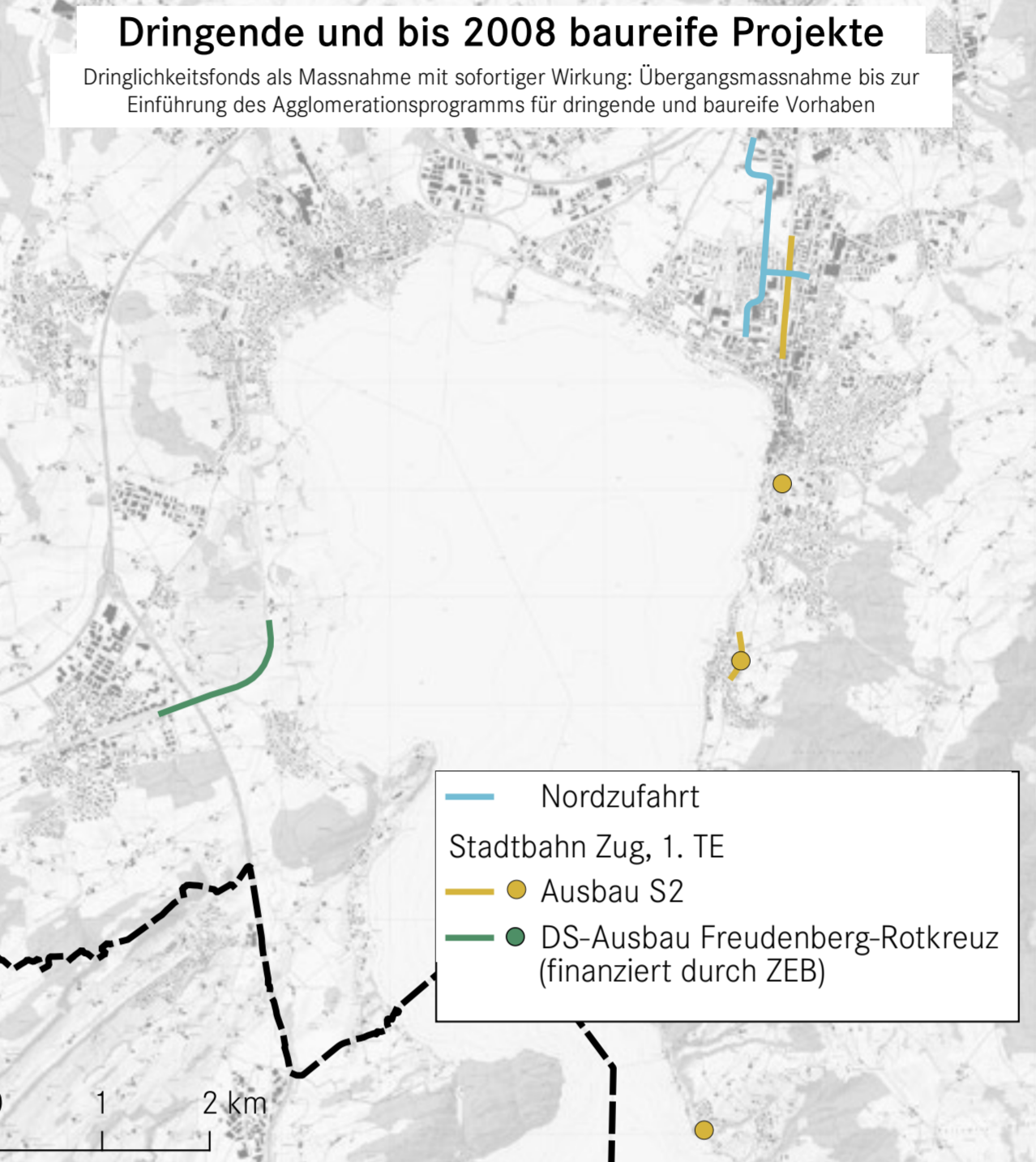
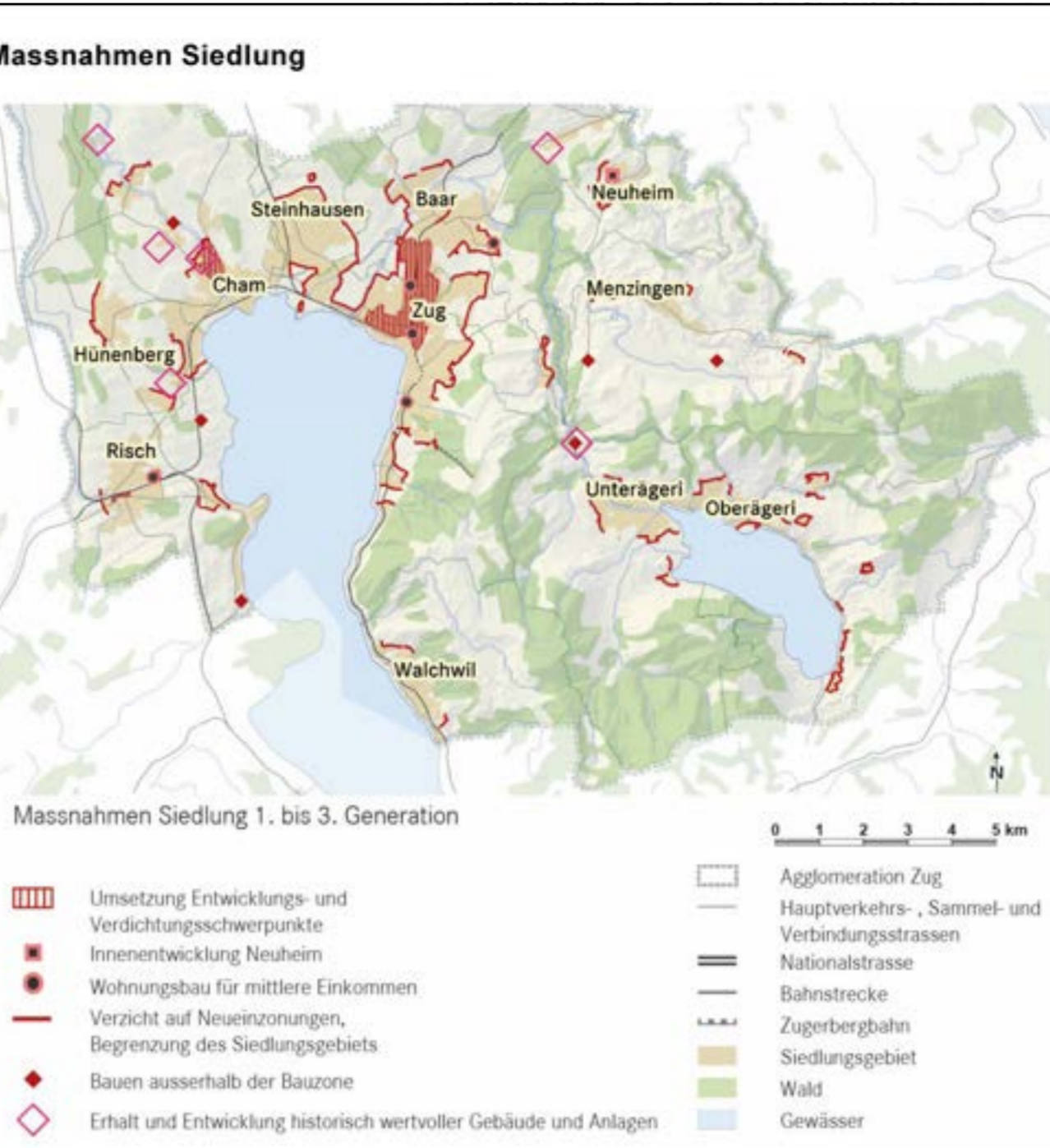
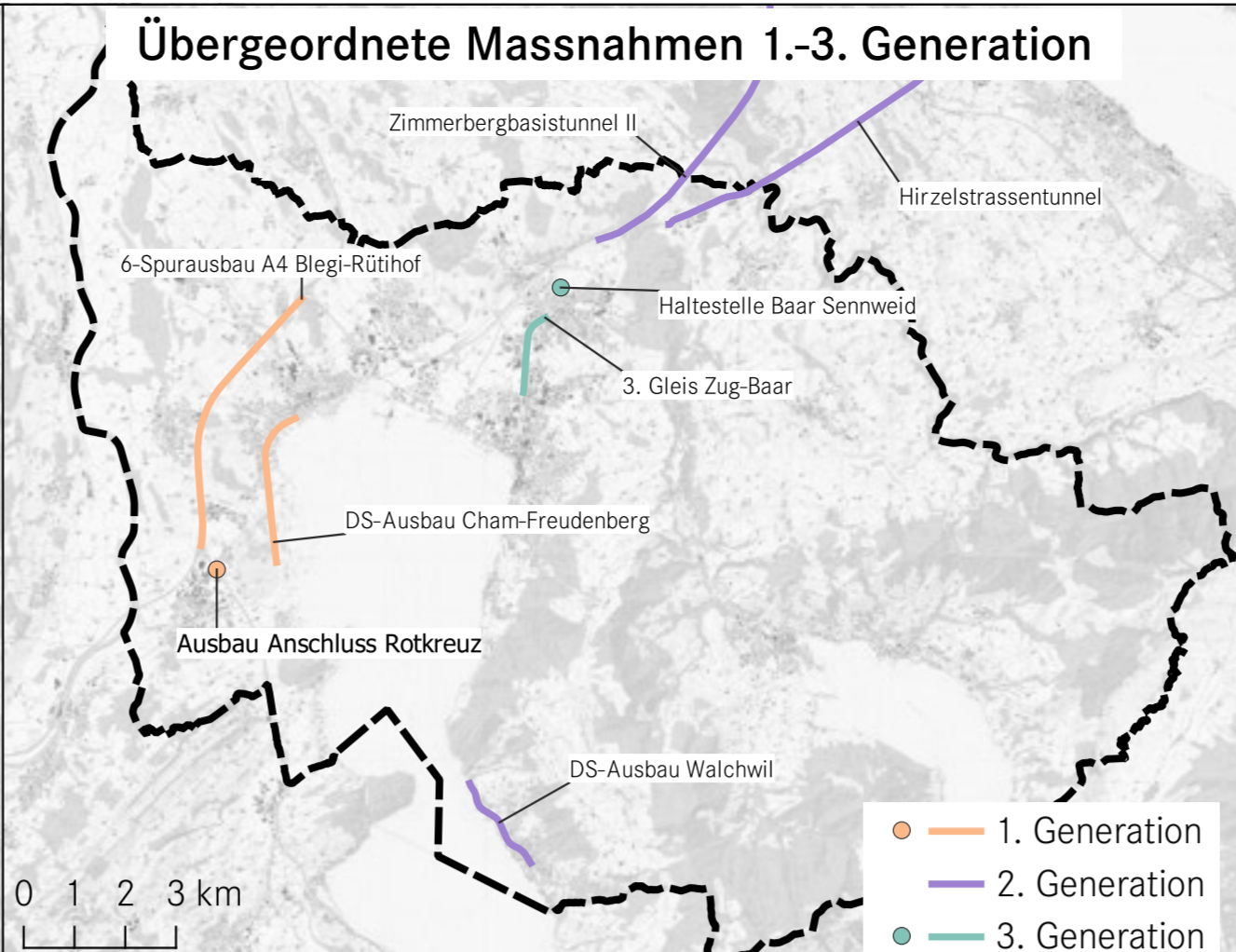
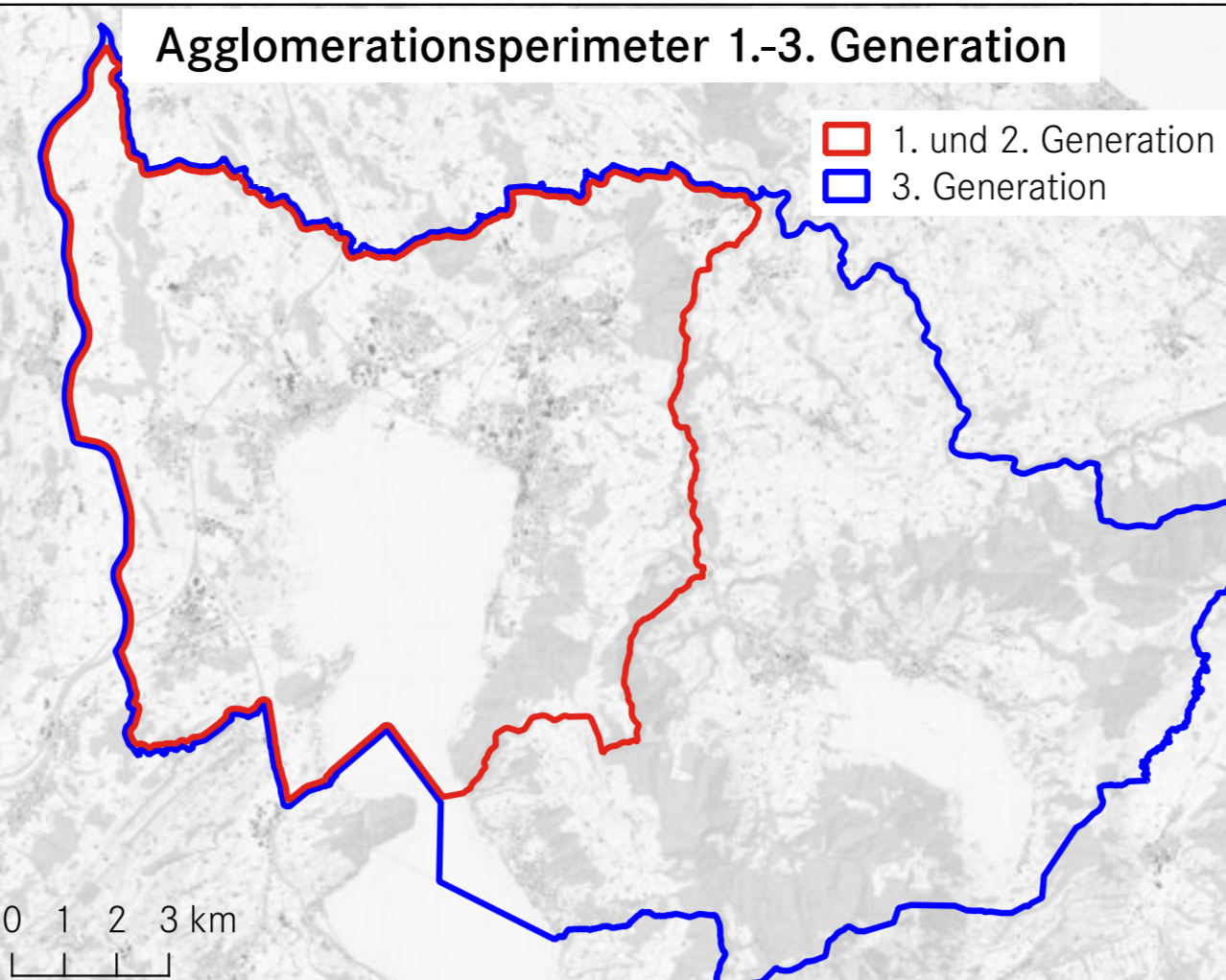
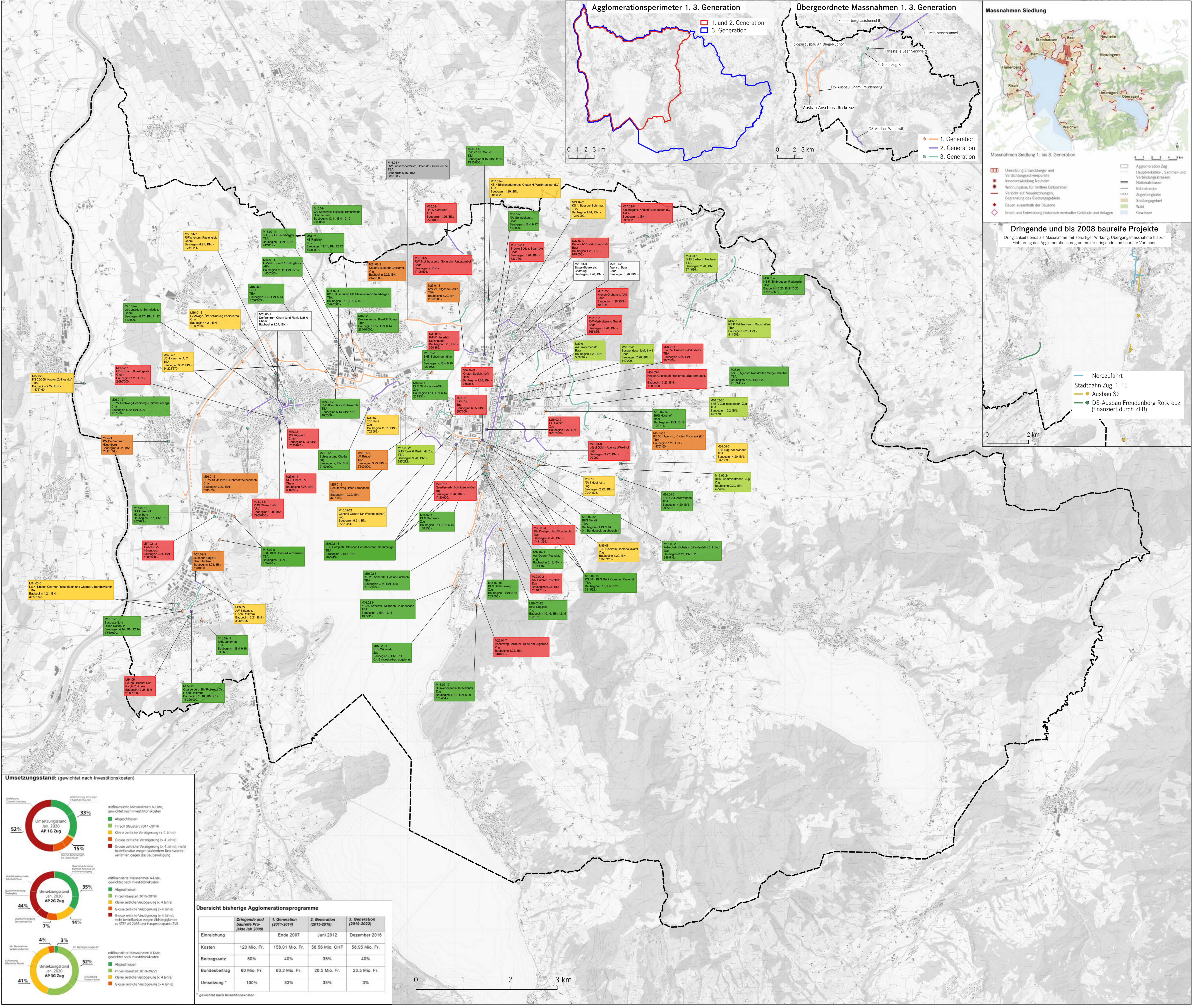
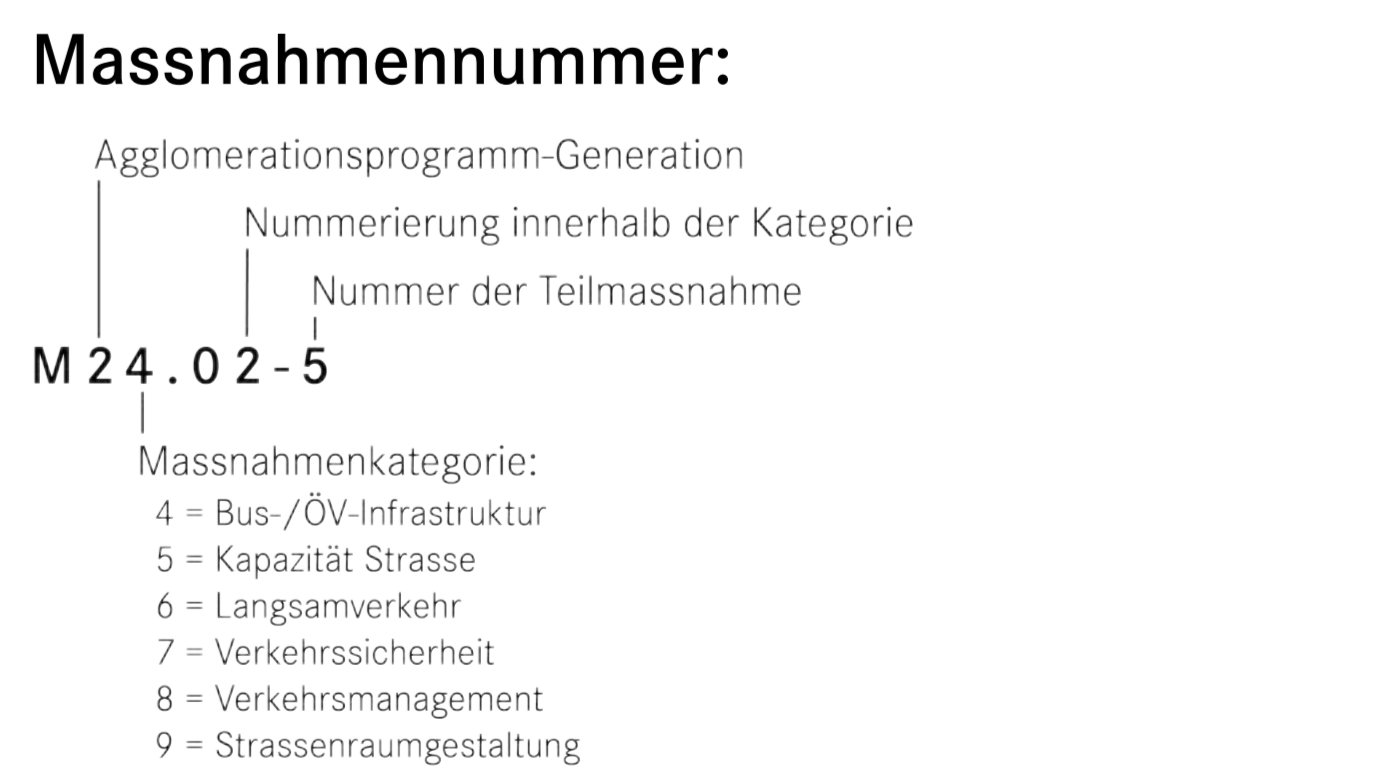
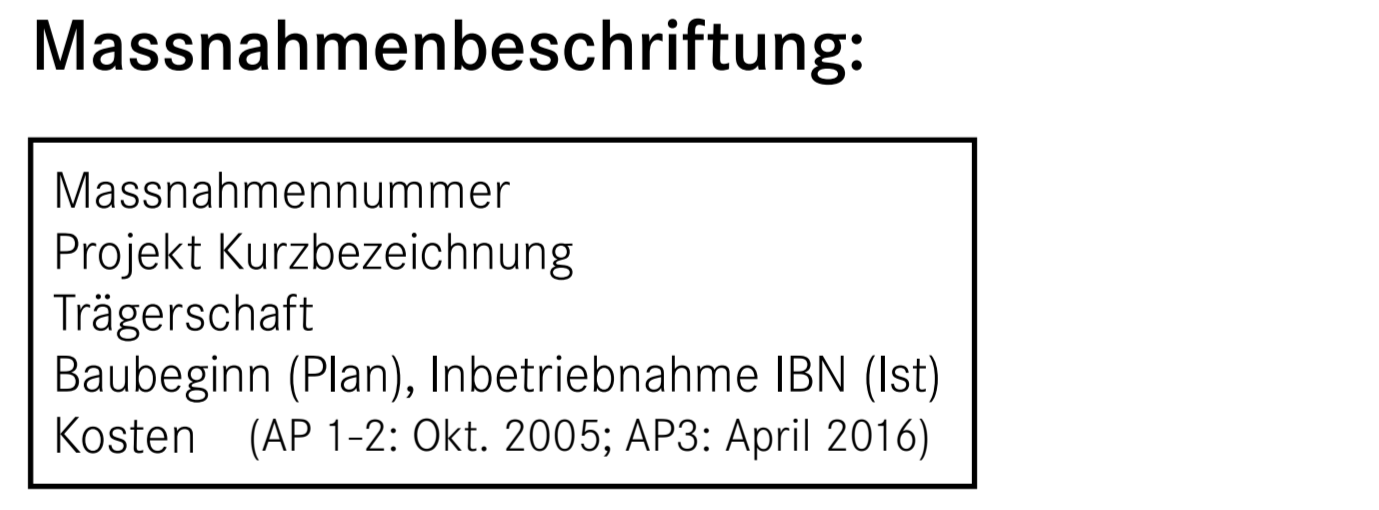
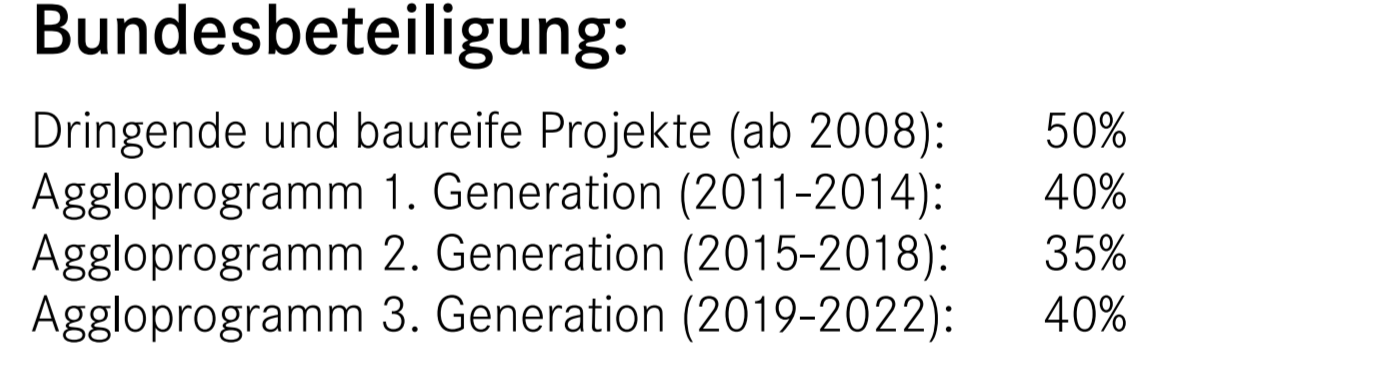
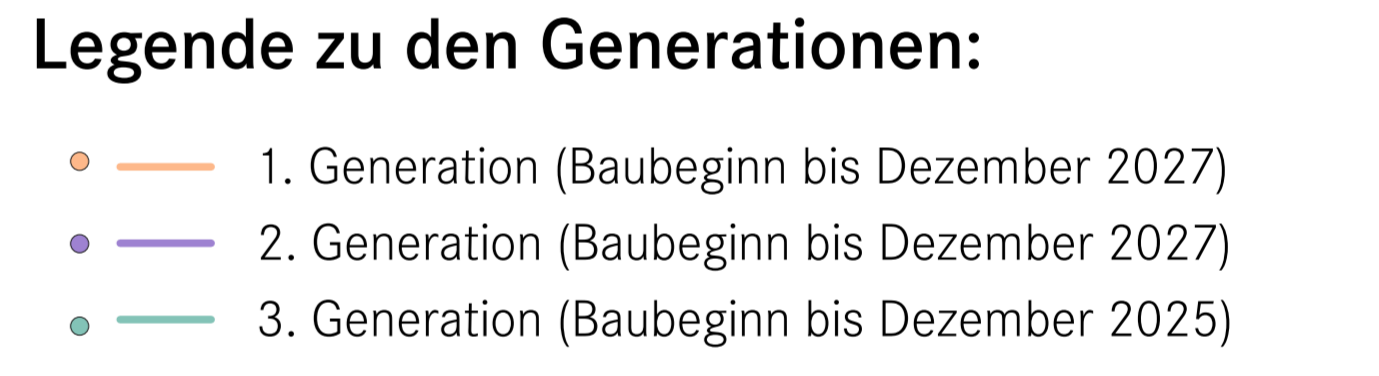


Agglomerationsprogramme Zug 1. - 3. Generation Umsetzungsstand

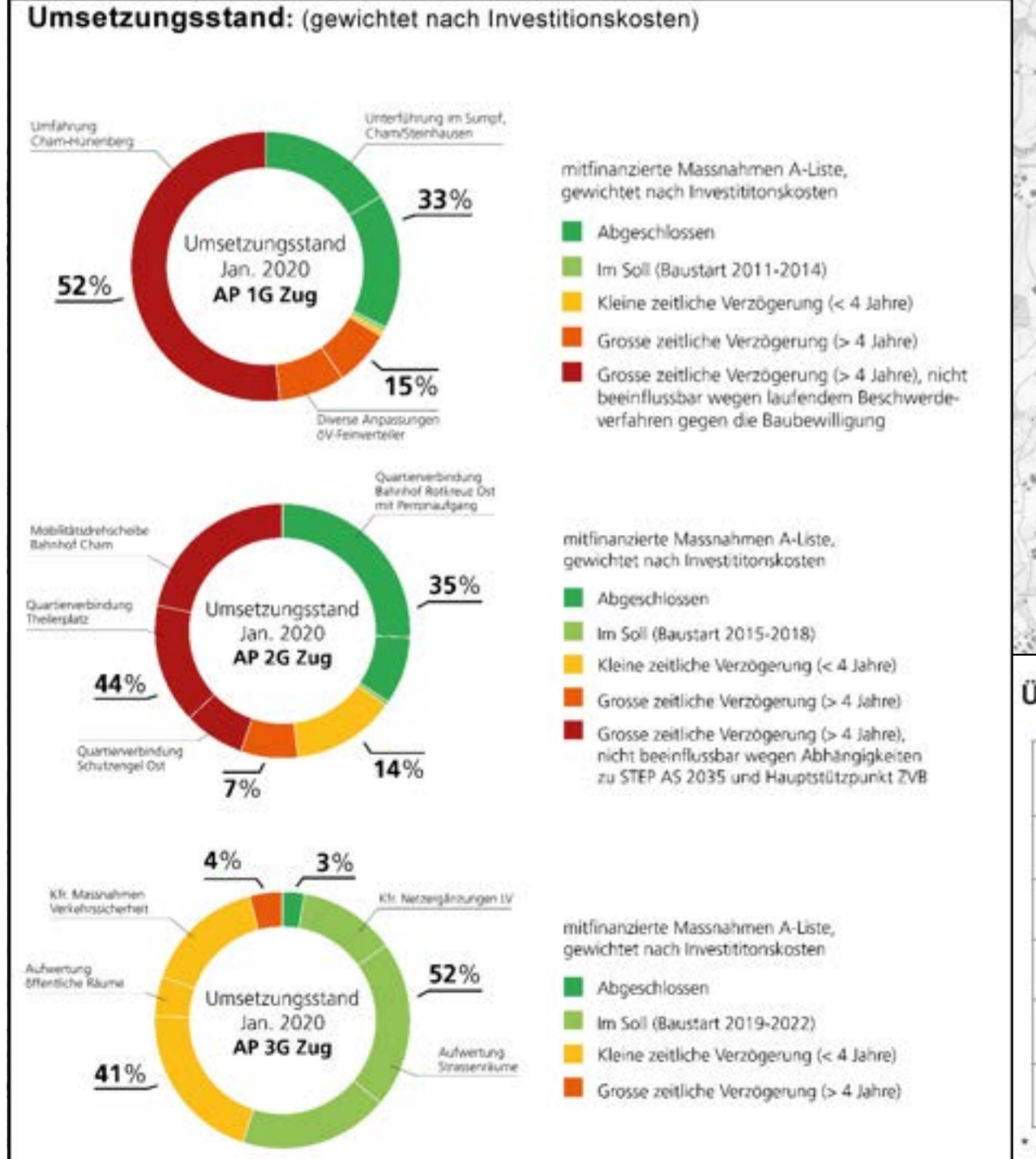


Kanton Zug
Amt für Raum und Verkehr



Abkürzungen:

AW	Aufwertung / Sicherheit Strassenraum
BHS	Bushaltestelle
HS	Haltestelle
KS	Kantonstrasse
MDS	Multimodale Drehscheibe
R/FW	Rad-/Fussweg
RW	Radweg
UF	Unterführung



Übersicht bisherige Agglomerationsprogramme

Einreichung	Dringende und baureife Projekte (ab 2008)	1. Generation (2011-2014)	2. Generation (2015-2018)	3. Generation (2019-2022)
Ende 2007		158.01 Mio. Fr.	58.56 Mio. CHF	58.95 Mio. Fr.
Ende 2012				23.5 Mio. Fr.
Dezember 2016				
Kosten	120 Mio. Fr.	158.01 Mio. Fr.	58.56 Mio. CHF	58.95 Mio. Fr.
Betragsbeitrag	50%	40%	35%	40%
Bundesbeitrag	60 Mio. Fr.	63.2 Mio. Fr.	20.5 Mio. Fr.	23.5 Mio. Fr.
Umsetzung *	100%	33%	35%	3%

* gewichtet nach Investitionskosten

